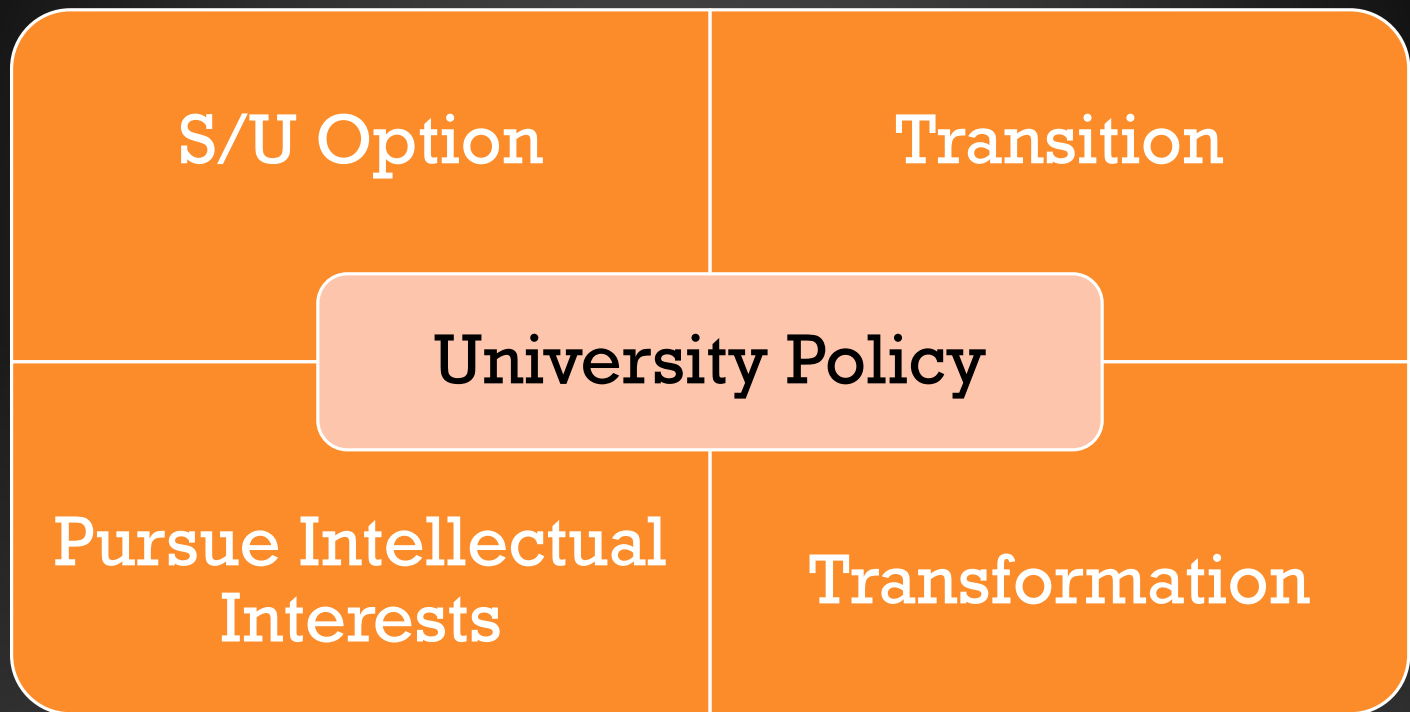
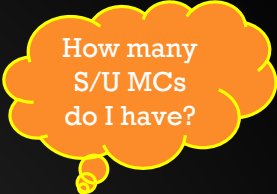


What is the Grade-Free Scheme?



Introduction to the Grade-Free Scheme

- I. S/U Limit
- II. Module S/U Eligibility
- III. S/U Impact on You
- IV. Making Informed S/U Decisions
- V. S/U Exercise
- VI. Important S/U Resources
- VII. S/U Timeline
- VIII. Precautionary Notes



How many
S/U MCs
do I have?

I. S/U Limit

S/U Limit is based on:

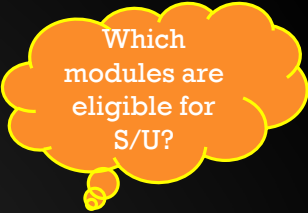
- **Prior University Experience/Degree**
- **Advanced Placement Credits (APCs)**
 - NUS modules taken and passed prior to admission to NUS
 - Modules completed at another tertiary institution recognised by NUS
 - Based on performance in placement tests set by the relevant Faculty
 - NUS modules with (grade C & above) read by H3/ RNSmen/ NUSHS can be granted **Advanced Placement Credits with grade transfer (APGs)**

I. S/U Limit

| Group | APCs and/or Prior University Experience | S/U MCs* for first two regular semesters |
|-------|---|--|
| A | Up to 19 APCs | 32 |
| B | 20 APCs and more | 20 |
| C | With prior University experience and granted credits for modules read | 12 |
| D | With prior University degree | 0 |

* If the given S/U Modular Credits (MCs) are not fully utilized in your first two regular semesters, only up to 12 S/U MCs can be carried forward to your subsequent semesters

II. Module S/U Eligibility

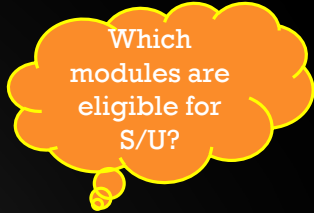


Which modules are eligible for S/U?

In *general*, S/U option is eligible for:

- Level 1000 modules
- Level 2000 modules *without* NUS modules as pre-requisites
- CLS language modules (all levels)

II. Module S/U Eligibility



<https://myportal.nus.edu.sg/studentportal/academics/ug/su-homepage.html>

| Modules | Eligible for S/U options ? | Remarks |
|--|----------------------------|--|
| <p>All level 1000 modules (Including Yale-NUS modules read by NUS students)</p> | <p>✓</p> | <p>The following list of modules are not eligible:</p> <ul style="list-style-type: none"> ▪ CELC's Level 1000 English language proficiency modules (zero MC) (ES1000, ES1102, EM1001, EM1002, EM1201, EM1202) ▪ YSTCM's Level 1000 Major Study modules (MUA1101, MUA1161, MUA1162, MUA1190, MUA1191) |
| <p>Level 2000 modules without NUS modules as pre-requisites (Including Yale-NUS modules read by NUS students)</p> | <p>✓</p> | <p>The following list of modules are not eligible:</p> <ul style="list-style-type: none"> ▪ USP's Writing and Critical Thinking modules (UWC2101%) and Quantitative Reasoning modules (UQF2101%) |
| <p>Level 2000 modules with NUS modules as pre-requisites (Including Yale-NUS modules read by NUS students)</p> | <p>✗</p> | <p>The following list of modules are eligible:</p> <ul style="list-style-type: none"> ▪ CELC's Ideas & Exposition modules (IEM2201%, UTW2001%) ▪ CELC's Level 2000 communications modules (CS2101, ES2002, ES2007D, ES2007S, ES2331, CS2301, IS2101) ▪ FASS' Level 2000 language modules ▪ Yale-NUS' Level 2000 language modules ▪ GEK2508, GEM2509 |

III. S/U Impact on You

What will happen to my grades when I S/U?

Cumulative Average Point (CAP)

$$\text{CAP} = \frac{\text{Sum (module grade point x MCs assigned to module)}}{\text{Sum (MCs assigned to all modules used in calculating the numerator)}}$$

Modules with no assigned MCs or grade points are excluded from the calculation of CAP.

III. S/U Impact on You

| Your Grade | When you exercise S/U option . . . |
|------------|---|
| A+, A, A- | <ul style="list-style-type: none">• Change to 'S' grade• Not factored into CAP computation• Modular Credits (MCs) earned to fulfil degree completion requirements |
| B+, B, B- | |
| C+, C | |
| D+, D | <ul style="list-style-type: none">• Change to 'U' grade• Not factored into CAP computation• No MCs will be earned to fulfil degree completion requirements[^]• Cannot be used to fulfil pre-requisites to other modules |
| F | |

[^] Single degree undergraduates need to fulfil 120 – 160 MCs to graduate

* CAP determines your degree classification

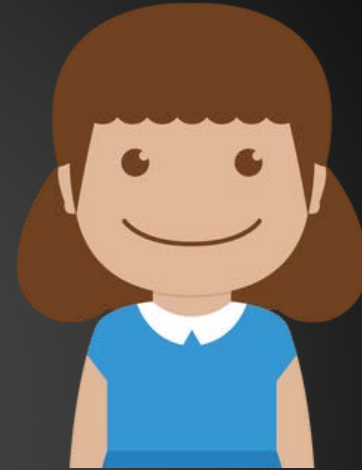
III. S/U Impact on You



Shawn

Full-Time Science Student

B,C,C,D,F = CAP 1.70



Cheryl

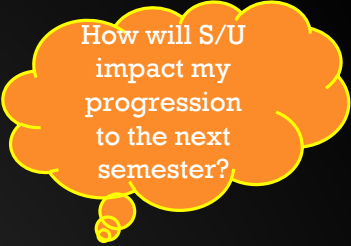
Full-Time Science Student

B,C,C,D,F = CAP 1.70

B,S,S,U,U = CAP 3.50

Changes to the grade and CAP after S/U

III. S/U Impact on You



How will S/U impact my progression to the next semester?

- Continuation Requirements (Academic standings)

| Group | S/U MCs | First Semester | Second Semester | Third Semester Onwards |
|-------|---------|---|-----------------|---|
| A | 32 | Progress to next semester regardless of CAP | | If CAP < 2.0, student will be placed on academic probation/dismissal |
| B | 20 | Progress to next semester regardless of CAP | | If CAP < 2.0, student will be placed on academic probation/dismissal |
| C | 12 | If CAP < 2.0, student will be placed on academic probation/dismissal | | |
| D | 0 | If CAP < 2.0, student will be placed on academic probation/dismissal | | |

- No Dean's List for the first two regular semesters
- Check with respective Faculty/School on overseas exchange/educational programme selection requirements and criteria

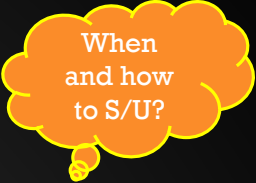
IV. Making Informed S/U Decisions



Seek S/U related advice from:

- Administrators from your Faculty/School/Department
- Academic Advisors
- Provost Blog – SU1101: The Science & Art of S/U Option
- Peers/Seniors (remember to verify the advice given as your peers & seniors might be from cohorts with different S/U policy)

V. S/U Exercise



When
and how
to S/U?

- Start of Exercise: Immediately upon each semester's result release
- Duration: 3 working days
- End of Exercise: 6pm on third working day - **NOT MIDNIGHT**
- System Navigation: **Student Information System > Self Service > Enrollment > S/U Declaration**

VI. Important S/U Resources

Where to read more about S/U?

S/U Homepage

(<https://myportal.nus.edu.sg/studentportal/academics/ug/su-homepage.html>)

- ✓ S/U FAQs
- ✓ S/U System and User Guide
- ✓ Module S/U Eligibility
- ✓ Common Issues Encountered
- ✓ Online CAP Calculator

While you are off-campus, sign in to **NUS WebVPN** (<https://webvpn.nus.edu.sg>) to access the S/U Homepage or declare S/U

The screenshot shows the NUS myPortal@NUS website. The main content area is titled "S/U Declaration Exercise Schedule" for the Academic Year 2017/2018. It features a table with columns for Semester 1, Semester 2, and Special Terms. The table lists dates for Undergraduate (excluding B.Tech) and B.Tech students. Below the table, there is a section for "Satisfactory / Unsatisfactory (S/U) Declaration Exercise" with explanatory text. Further down, there are sections for "Important Information for S/U" and "Useful Links".

| | Semester 1 | Semester 2 | Special Terms |
|----------------------------------|-------------------------------|-----------------------------|---|
| Undergraduate (excluding B.Tech) | 27 Dec – 29 Dec 2017 (by 6pm) | 4 Jun – 6 Jun 2018 (by 6pm) | Special Term (Part 1): 6 Jul – 10 Jul 2018 (by 6pm) Special Term (Part 2): 17 Aug – 20 Aug 2018 (by 6pm) |
| B.Tech | | | B.Tech Special Term 2: 8 Aug – 6 Aug 2018 (by 6pm) |

The screenshot shows the NUS WebVPN login page. It features the NUS logo and the text "nVPN". Below the logo, there is a section for "I am accessing as a:" with radio buttons for "staff", "student", and "visitor". At the bottom, there is an orange button that says "To know more about nVPN, click here".

VII. S/U Timeline

How will I be informed on S/U timeline?

Student Portal → Examination Directory → **Important Deadlines on Exam Related Matter**

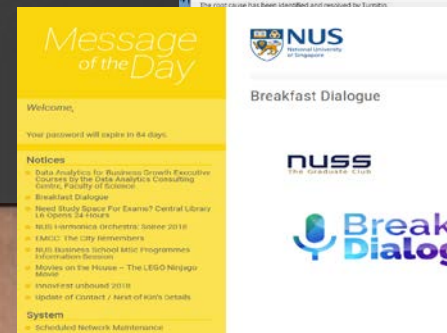
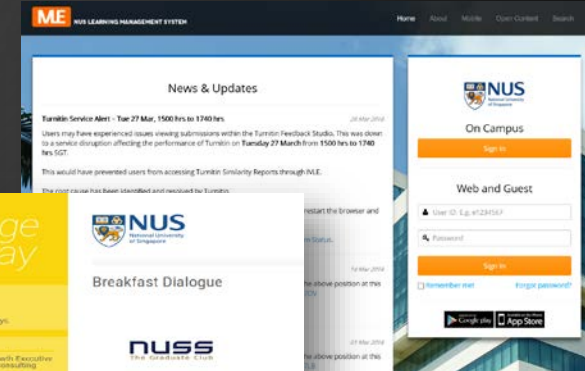
Email and reminders to your NUS student email:

- ✓ Before Examinations
- ✓ Before release of semester's results
- ✓ First day of S/U declaration exercise



Announcements after every examination at:

- ✓ NUS Message of the Day (MOTD)
- ✓ Integrated Virtual Learning Environment (IVLE) and LumiNUS



VIII. Precautionary Notes

As an undergraduate, the onus is on the student to ensure that he/she can participate and declare S/U options successfully during the online S/U exercise.

- Expect **connectivity challenges** and plan for **contingency measures**
- Seek **clarifications** and contact the **administrators** where necessary
- Remember to **dedicate some time**



Feel free to contact us via
sudeclaration@nus.edu.sg
to clarify any doubts
(especially **before/during** the S/U exercise).